



New You. New Success.

CAMRY



Specifications may vary from model(s) shown. Please contact the official dealer for more information.

Fresh evolution

With a sophisticated and aggressive individuality, the Camry evolves a global standard for prestige, creating a new luxury that invites you into the future. Blending a fresh attitude with advanced technologies, the eye-catching presence shapes a truly exhilarating driving experience, complemented by refined comforts and deep peace of mind.

LUXURY, COMFORT & SAFETY



Spacious and comfortable seating



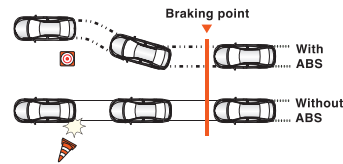
Advanced audio with back camera



3-zone auto air conditioner



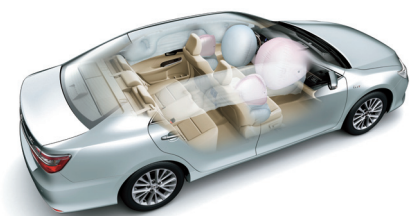
Powerful and fuel efficient engine



Anti-lock Brake System (ABS)



Vehicle Stability Control (VSC)



SRS airbags

EXTERIOR COLORS



White Pearl Crystal Shine



Silver Metallic



Gray Metallic



Attitude Black Mica



Dark Brown Mica Metallic

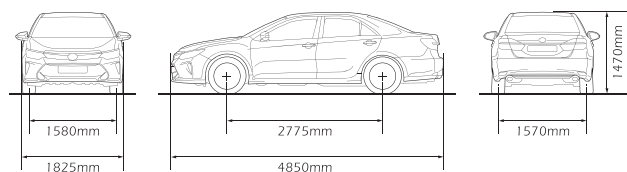


Grayish Blue Mica Metallic

SPECIFICATIONS

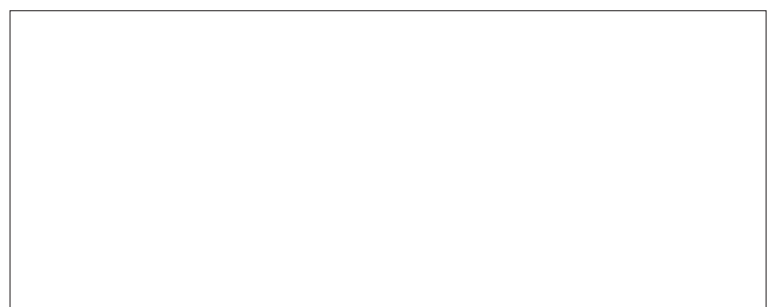
DIMENSIONS & WEIGHT			
Overall length	mm	4850	
Overall width	mm	1825	
Overall height	mm	1470	
Wheelbase	mm	2775	
Tread	Front	mm	1580
	Rear	mm	1570
Ground clearance	mm	150	
Curb weight	kg	1495	
Gross vehicle weight	kg	2000	
ENGINE			
Engine model code	2AR-FE/2.5-liter petrol engine		
Engine type	4-cyl. in-line, 16-valve with Dual VVT-i		
Piston displacement	cc	2494	
Max. output	kW/rpm	133 / 6000	
Max. torque	Nm/rpm	231 / 4100	
Fuel type	Electronic Fuel Injection		
TRANSMISSION			
Transmission type	6-speed automatic		
CHASSIS			
Suspension	Front	MacPherson struts (with stabilizer bar)	
	Rear	Dual-link struts (with stabilizer bar)	
Brakes	Front	16-inch discs	
	Rear	16-inch discs	
Minimum turning radius (tire)	m	5.5	
Tires	215/55R17		

- Addition of extra features may change figures in this chart.
- Toyota Motor Asia Pacific Pte Ltd. reserves the right to alter any details of specifications and equipment without notice.
- Vehicle body color might differ slightly from the printed photos in this leaflet.
- Specifications may vary from model(s) shown. Please contact the official dealer for more information.



STANDARD EQUIPMENT (EXTERIOR)		
Headlamps	2 HID, 2 halogen (with daytime running light)	
Front fog & driving lamps	●	
Outside rearview mirror	Electrically retractable	
Rear combination lamps	LED type (with emergency brake signal)	
Disc wheel	17-inch alloy	
STANDARD EQUIPMENT (INTERIOR)		
Electric Power Steering (EPS)	●	
Cruise control	●	
Steering column / wheel	Tilt & telescopic / leather	
Anti-theft system	Alarm & immobilizer horn	
Windshield wiper system	Rain sensing (auto)	
Audio system	AM/FM/DVD/BD/USB/II/WIFI//back camera/gesture control/voice control and phone connectivity	
Air conditioning	3-zone automatic air conditioner	
Speedometer	Optitron	
Steering wheel switches	● (Audio + MID)	
Push start system	●	
Front seat	Powered driver+passenger	
Rear seat	40/20/40 ; power reclining	
Seat cover material	Leather	
Power rear window sunshade	●	
SAFETY SYSTEM		
Anti-lock Brake System (ABS) with Brake Assist	●	
Vehicle Stability Control (VSC)	●	
Hill-start assist system	●	
SRS airbags	D+P+front side+curtain+D-knee	
Seatbelts	Front	3-point ELR x 2 (with pretensioners and force limiters)
	Rear	3-point ELR x 3
Child restraint system	Rear	ISO-FIX + tether anchors
Parking assist sensor	Clearance & back sonars	

OFFICIAL DEALER



TOYOTA MOTOR ASIA PACIFIC PTE LTD

www.toyota-myanmar.com